

SHAPE YOUR MATTRESS



Hera
unlimited

MECA PRESENTS ON THE INTERNATIONAL MARKET THE LATEST REVOLUTIONARY QUILTING MACHINE

Hera unlimited

1400 s.p.m.



A new **Hera** has appeared in the mattresses' market. Meca presents its latest double chain stitch quilting machine capable of working at 1400 s.p.m. thanks to a new and groundbreaking project which goes beyond every other quilting system existing nowadays.

After 2 years of research and development, and thanks to its multiyear experience Meca has developed an avant-garde quilting machine that simplifies all the cinematic movement, and radically decreases the mechanical parts that are necessary for the formation of the double chain stitch.

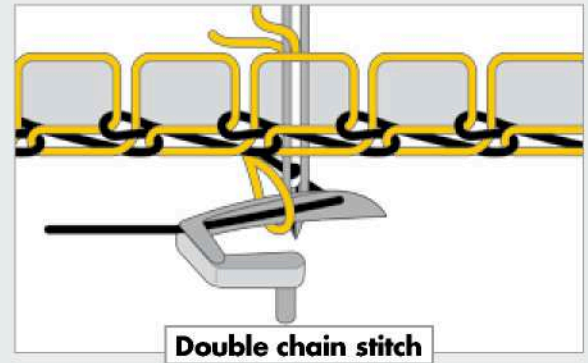
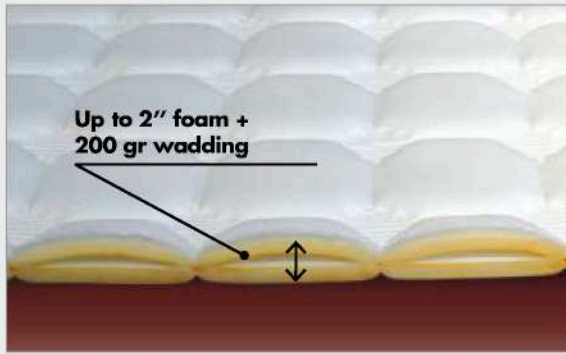
Moreover, it introduces an inedited and dynamic pretension system of the materials. Due to this simplification, **Hera** is able to work at very high speed guaranteeing an optimal quality of the final article.



Hera satisfies the market with flexibility and reliability. **Hera** is *the* answer to all the customer' requirements creating any 360° continuous pattern at very high productivity; in addition the introduction of the new patented system of independent bars opens a new scenery in the realization of new pattern-link drawings, with hourly production and quality unrealizable until now, even with the latest-generation of elastic knitted materials.

All this is now possible thanks to the following characteristics:

- **Independent presser feet** instead of the traditional presser plate
- **Independent needle bars with oscillating movements (PCT)**
- **Dynamic and constant pretension of the materials (PCT)**
- **Real-time control of the yarns' tension**

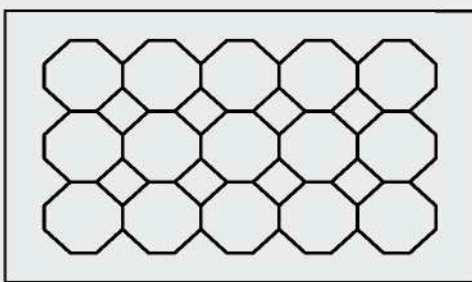
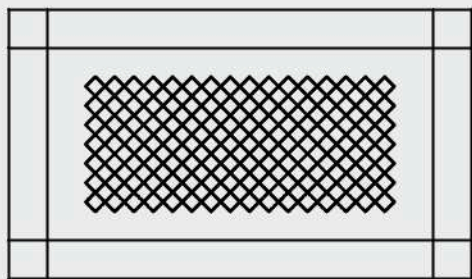
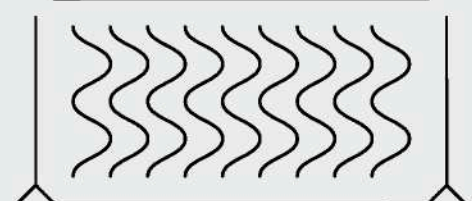
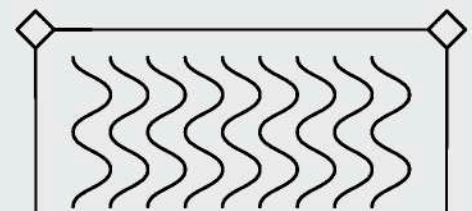
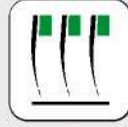
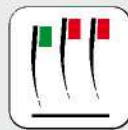
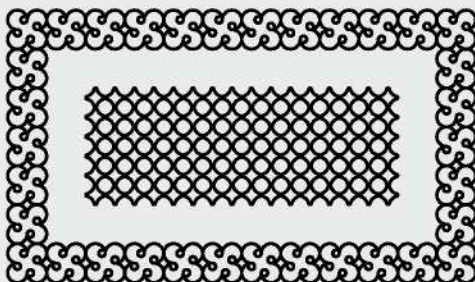
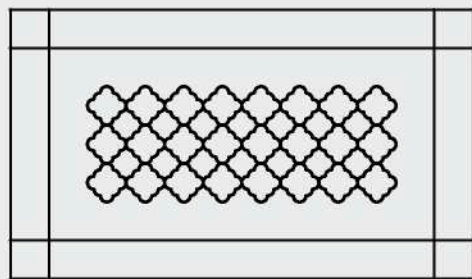
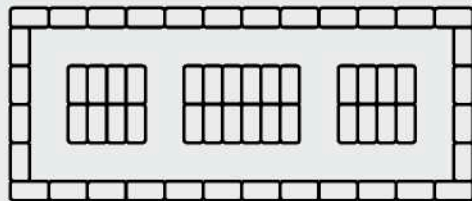
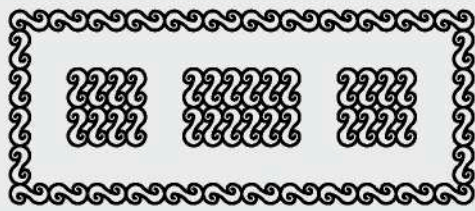


Hera revolutionizes the industry by combining standard quilting, 360° decorative patterns and pattern-link with **3 INDEPENDENT NEEDLE BARS** into one high productive and efficient sewing system, capable of performing unique and exclusive programs with maxima flexibility.

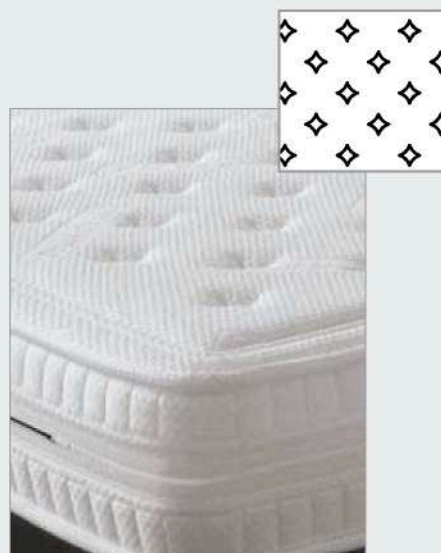
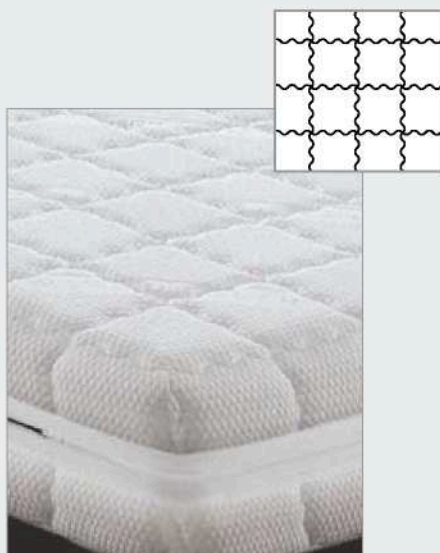
It is the most advanced three independent needle bars quilting machine complete with fully integrated computerized control system "Pegasus". HERA with its exclusive features permits the execution of unique quilting programs.



THE 3 INDEPENDENT NEEDLE BARS ALLOW THE EXECUTION OF INNUMERABLE PATTERN-LINK MOTIVES AMONG WHICH:



ALL THE STANDARD PATTERNS CAN BE REALIZED AT A FABULOUS HOURLY PRODUCTION



SHAPE YOUR MATTRESS



BED COVER - BED SPREAD





MAIN FEATURES AND FUNCTIONS

High precision control of Carriage and Rolls allows to realize and assure:

- absolute precision in 360° patterns
- no skipped stitches in any direction
- use of thin needles (130/160)
- quilting of extra heavy or very thin filling materials

High Performance aircraft aluminium alloy bushless.

Innovative oscillating needle-drive system guarantees a smooth, frictionless and high speed working without any maintenance.

Hera is equipped with 100 fixed loopers positions ready to accept any needle set avoiding long down time to move and set the loopers at new position.

No presser plate but Independent Positive Presser Feet.

- Presser feet only correspond to needles position
- Very tight stitches
- More quilting thickness and puff effect

90° Looper Bars reversing system to allow easy and fast looper threading operation.

Bartack & Jump with exclusive patented automatic top thread cutting system assuring zero tail on top surface.

Upper thread feeder with yo-yo action This device, thanks to its progressive pulling action, allows a stronger closing of stitches without stressing the top threads (as with the normal butterfly system), avoiding threads breaks.

Stop Motion for needles and loopers, fully integrated in Pegasus software which allow a visual control of the tension of every single thread.

Working Speed up to 1.400 spm.

Pattern Range 360°.

Carriage Stroke 12" (305 mm).

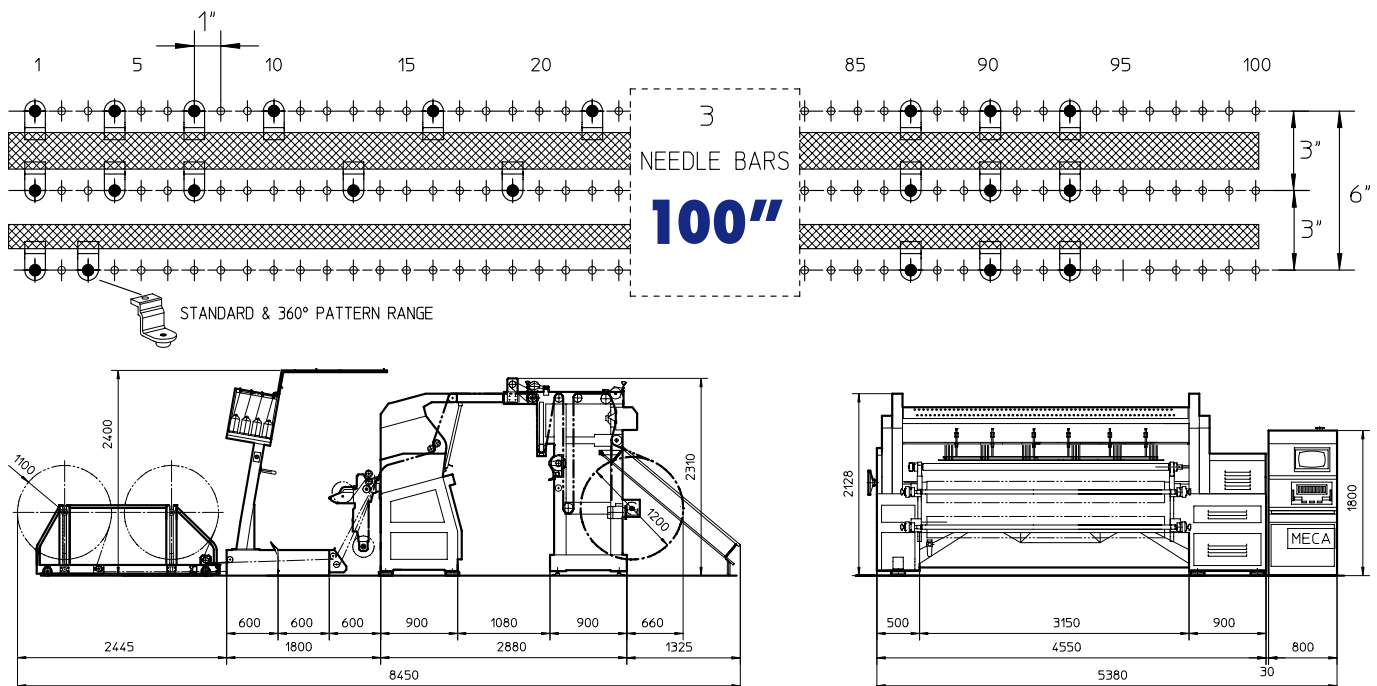
Theoretically no limit in back sewing.

Equistich: assuring equalized stitch length in all directions.

1" X 3" X 6": Needle Configuration - 3 Needle Bars

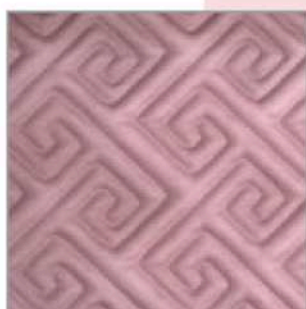
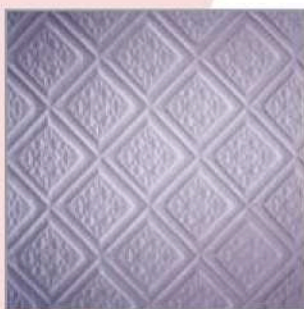
Multi roll material handling system.

Stitch Length: 1 ÷ 6 mm.



Needles Position	Needle Rows	Working Width	Carriage Stroke	Standard Feet	Stich Length	Working Speed
100 x 3 1" Pitch	3 3" - 6"	cm.254 (100")+ cm.30 (12")	mm 305 12"	64 1"	1 ÷ 6 mm	Up - to 1400 spm

QUILTING IDEAS



OPTIONAL



INDEPENDENT NEEDLE BARS



TOP THREAD TRIMMING DEVICE



STOP MOTION FOR NEEDLE AND HOOKS



EDGE CUTTERS



CROSS CUTTER



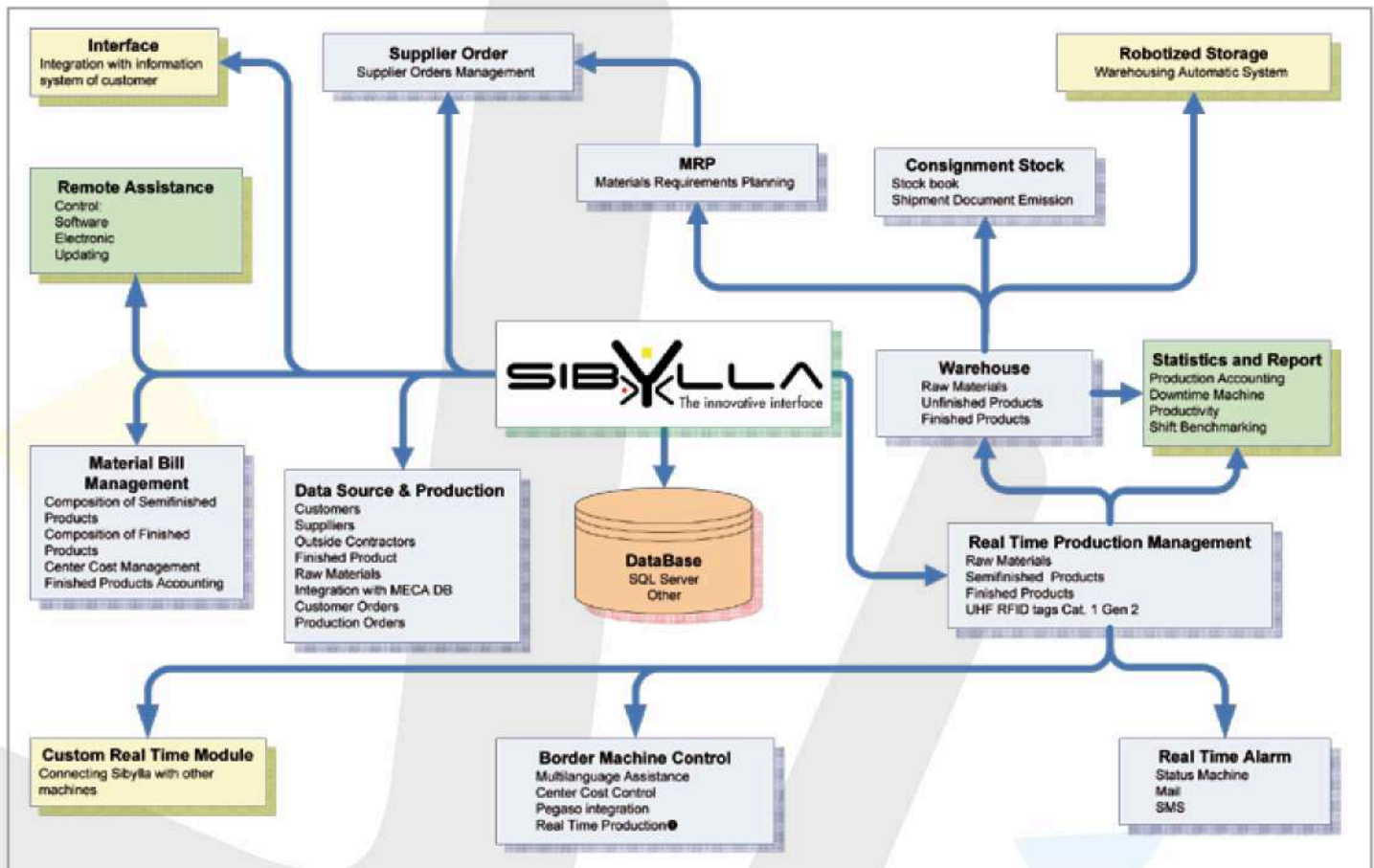
MULTI CUTTER



AUTOMATIC STAKER

MECA SOFTWARE

CUSTOMER SERVICE ■ DIAGNOSTIC & LOGS ■ USER FRIENDLY ■ DRAWING EDITOR ■ FLEXIBILITY ■ STATISTIC



THE INNOVATIVE INTERFACE

- Integrated and modular software
- MRP and ERP software for the mattress requirement planning
- User-friendly and Easy-to-use graphic interface
- Multilanguage software. The operator can select the language under which he wants to view the information
- Left-to-right and right-to-left writing
- International script

SIBYLLA is the new real-time software studied *ad-hoc* to control directly the complete mattress assembling as well as any center cast. SIBYLLA is MRP (Material Requirement Planning) and ERP (Enterprise Resource Planning) software carried out to satisfy the mattress market and just-in-time production line.

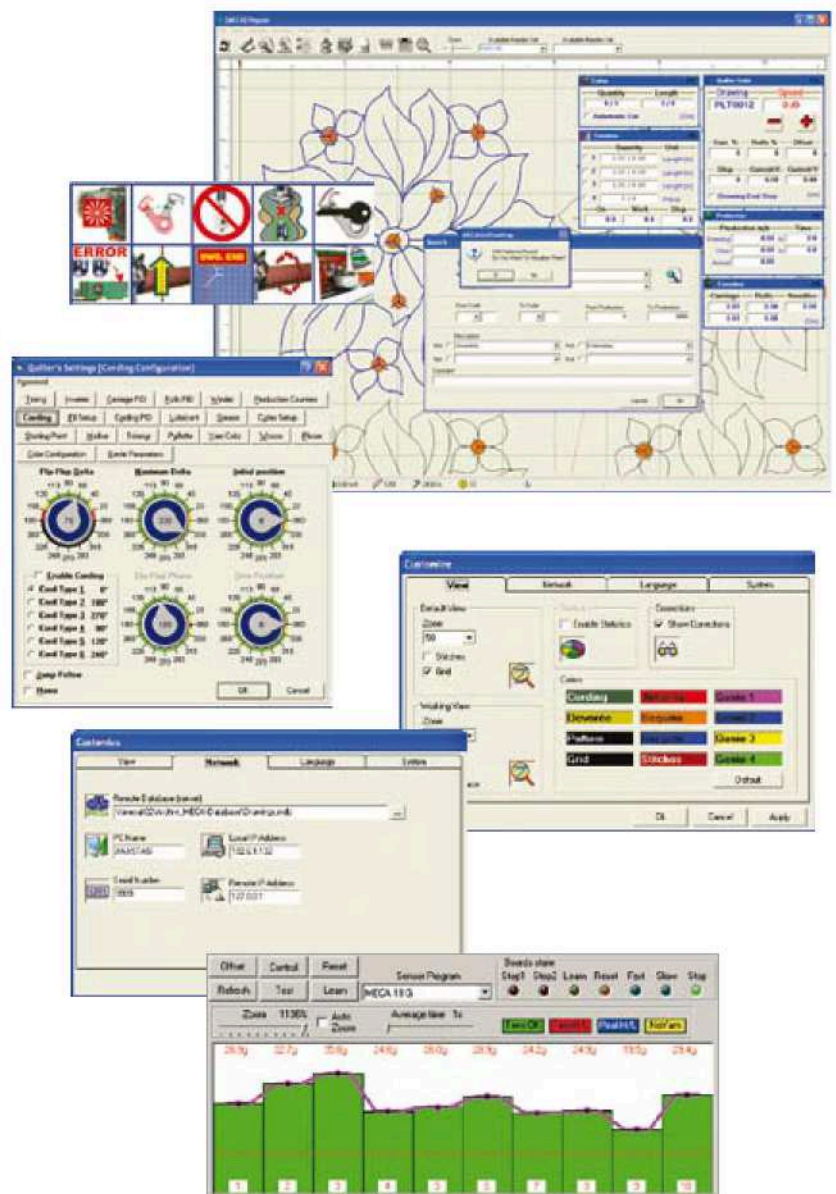


Pegasus

MAIN INNOVATIVE FEATURE

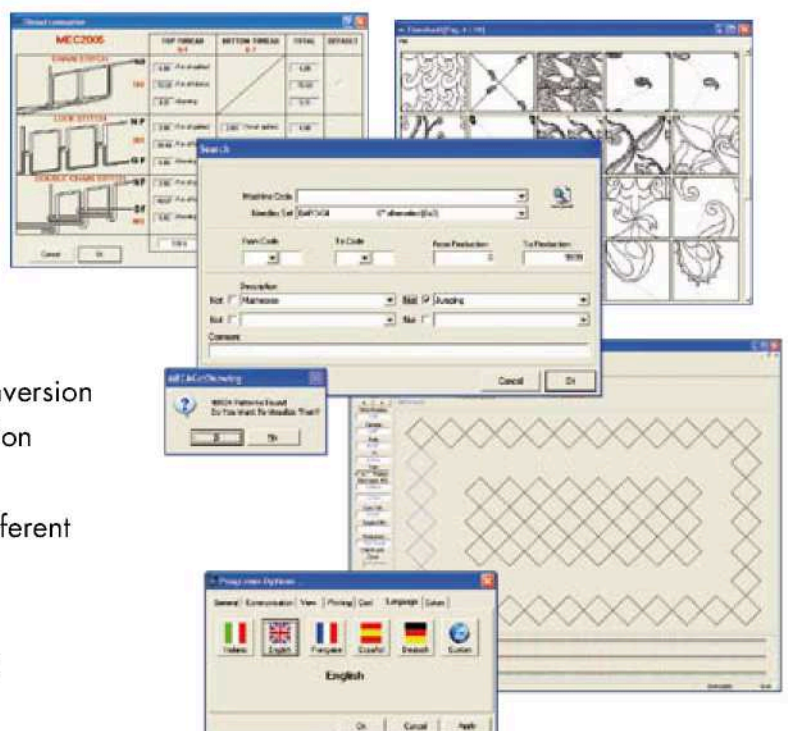
- Friendly graphic interface
- Touch screen
- Interconnection to Company net
- Integration with MECA db
- Auto-diagnostic failures
- Chat & Web-Cam
- Remote Assistance
- **INTEGRATED DIGITAL STOP MOTION**
 - Perfect visual thread adjustment
 - Simple operative mode
 - Constant consumption of bobbin thread
 - Quick stop in case of upper and lower thread breaking

All MECA's software can be automatically up-to-date via internet, lifetime and free of charge.



MECA database

- More than 40.000 available designs
- Quick calculation thread consumption and conversion
- A valuable support for research and optimisation of the production
- Research for threading, production, type of different design etc.
- Quick calculation of productions and costs
- Continuous free-online updating of any design daily developed





www.meca.it



MECA S.p.A.
Strada Provinciale Busto - Cassano, 3
21054 Fagnano Olona (VA) - Italy
Ph. +39 0331 685605 - Fax +39 0331 686340 / 686279
info@meca.it - www.meca.it