

INNOVATION

AGAIN BY



OLTRE - SO BEYOND



ECORding
MultiTech



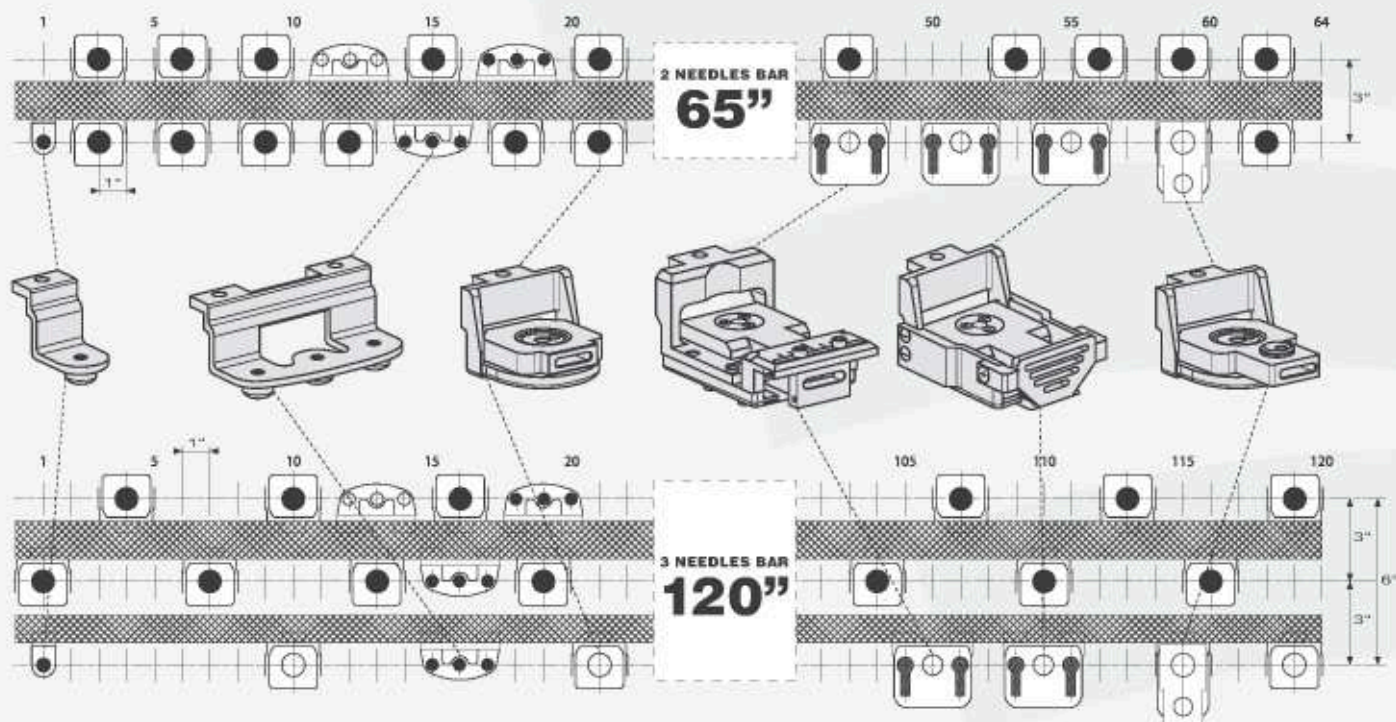
today SO BEYOND



a global performance in embroidery quilting

Unique and innovative highspeed quilter that in addition to the standard quilting, embroidery mode and cording programs permits, thanks to a patented TRANSPOWER system, the execution of different performances through the easy setting of interchangeable dedicated ROBOT FEET. (int. patent)

This machine revolutionises the industry by combining quilting and embroidery technologies into one high productive and efficient sewing system capable to perform 5 unique and exclusive programs with **MAXIMA** flexibility.



any actual and future innovative article by the 5 new **ECORding** technologies

- STANDARD QUILTING
- GARMENTS

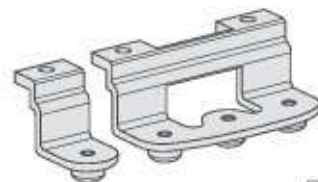
- EMBROIDERY MODE
- BEDSPREADS

- HOME FASHION
- FURNITURE

- CURTAINS
- MATTRESSES

STANDARD & EMBROIDERY MODE with 1 and 3 feet position

Combining the presser feet position using whatever needle set on one, two or three needle bars it permits the whole STANDARD QUILTING PROGRAM, with or without wadding, and the whole EMBROIDERY PROGRAM with a DATABASE SOFTWARE with more than 20.000 available patterns.



Pat.

CORDING PROGRAM with cord robot feet

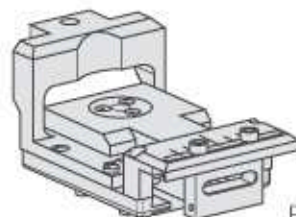
Combining the cord robot feet using whatever needle set either on one, two or three needle bars it permits the whole CORDING and CORDING FILL PROGRAM.



Pat.

RIRI PROGRAM with riri robot feet at 2" position

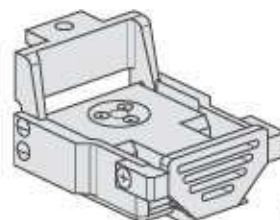
Combining the riri robot feet using whatever needle set at 2" or 3" on the front bar, it permits the whole PROGRAM for the APPLICATION of RIBBONS, from 10 up to 25 mm width, both for straight and ruffling, similar or intercalated, with an endless variety of unique passementeries effects.



Pat.

PLISSÉ PROGRAM with plissé robot feet at 2" position

Combining the plissé robot feet using whatever needle set at 2" or 3" on the front bar, it permits the whole PLISSÉ PROGRAM either on a simple fabric or with a lining below.



Pat.

MULTI TWIST PROGRAM with twin robot feet (for 65")

It permits the execution of unique articles combined with one, two or three ribbons, laid down or ruffled. In addition a twisted cord sewing. [optional]



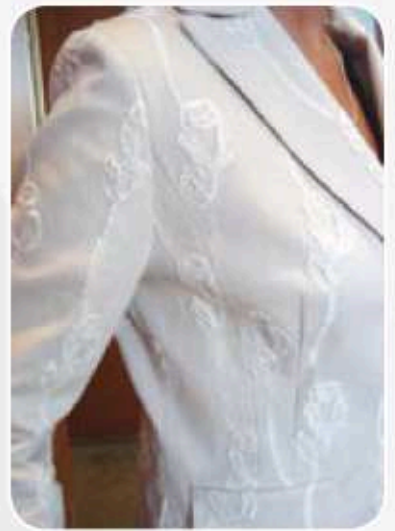
Pat.

NEXT

The patented "TRANSPower" system is projected to receive other robot feet to execute further programs possibly to be developed in the future ONLY by **MECA**

NEXT





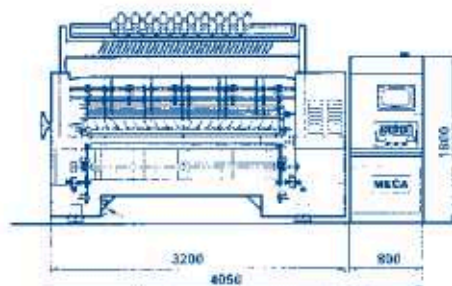
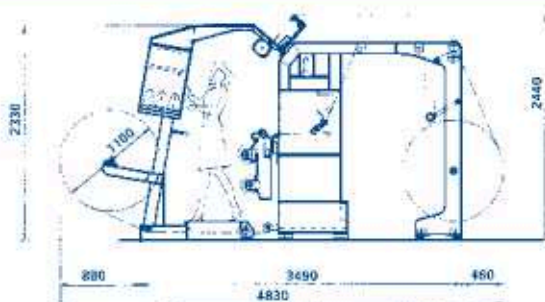
ECORDING

MultiTech

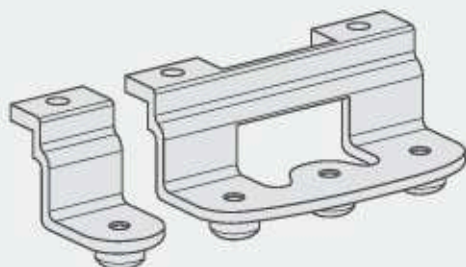
65"



Needles	Needle Rows	Working width	Carriage stroke	Cording heads	Riri heads	Plissé heads	Standard heads	Embroidery mode	Working speed
130 1" Pitch	2 3"	cm. 165 (65") cm. 180 (70")	mm 208 8"	42	20	20	42 x 3	Stitch Length mm 0,1 - 12,7	600/650 s.p.m.

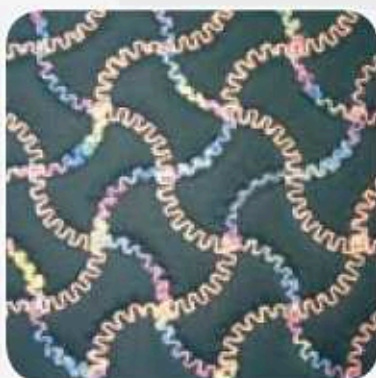
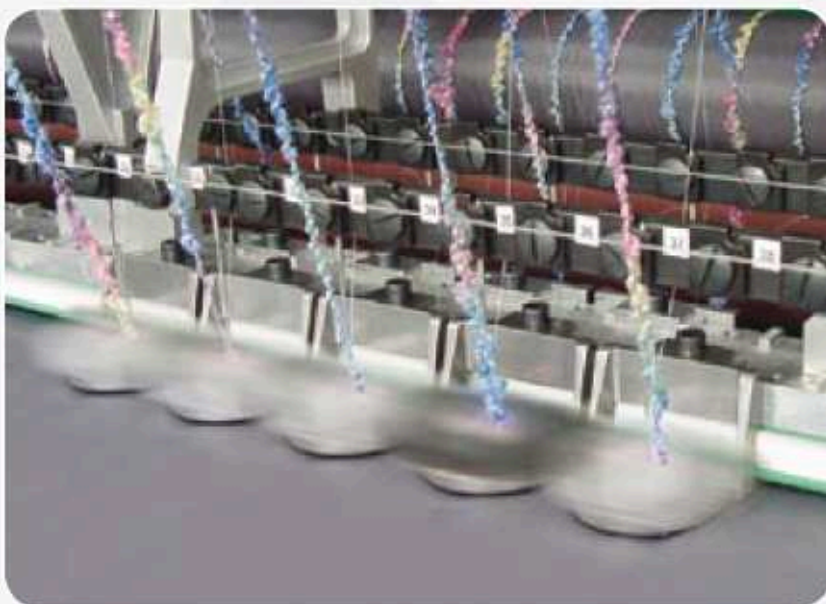
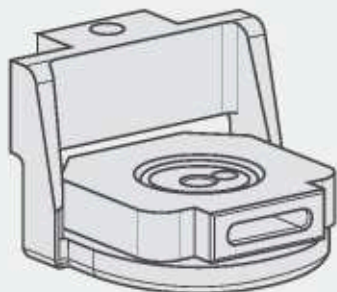


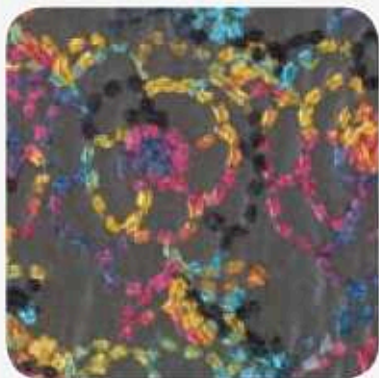
**Standard, Embroidery
and Embroidery Mode
Program**



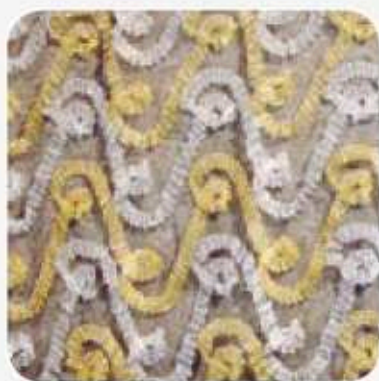
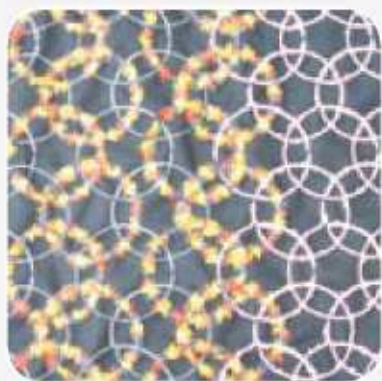


**Cording and
Cording Fill Program**









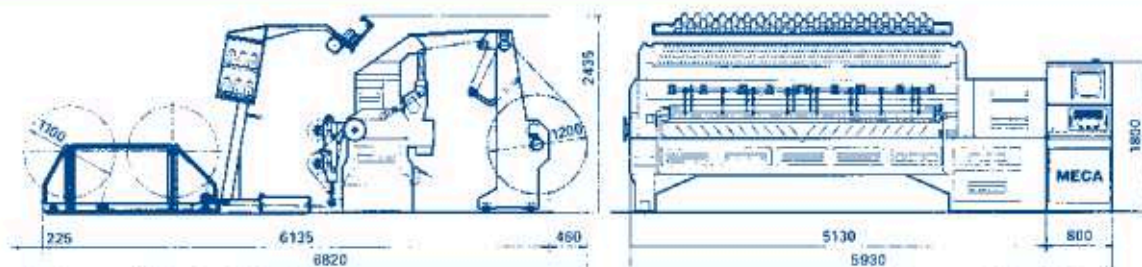


ECORDING MultiTech

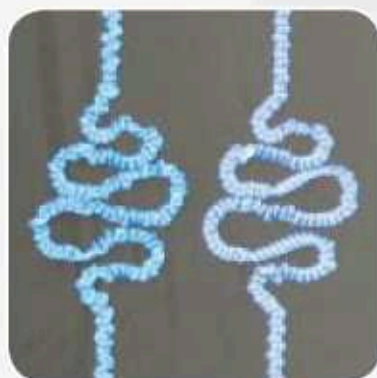
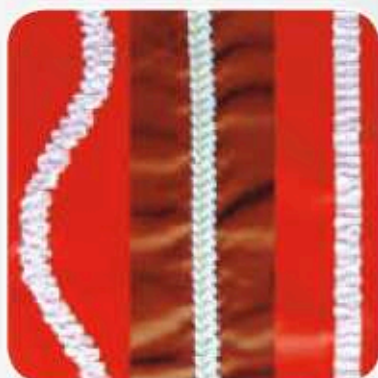
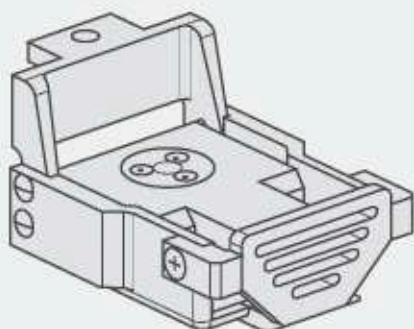
120"



Needles	Needle Rows	Working width	Carriage stroke	Cording heads	Riri heads	Plissé heads	Standard heads	Embroidery	Working speed
240 1" Pitch	3 3"-6"	cm. 305 (120") cm. 340 (135")	mm 305 12"	80	40	40	80 x 3	Stitch Length mm 0,1 - 6	600 s.p.m.

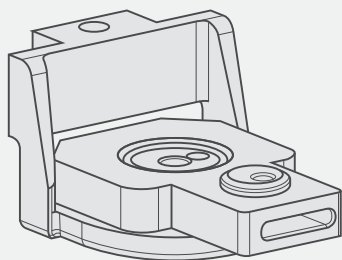


Riri and Plissé Program





Multi Twist Program

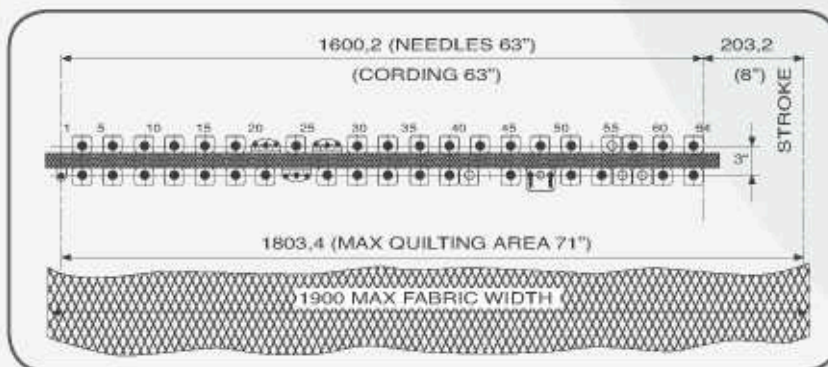




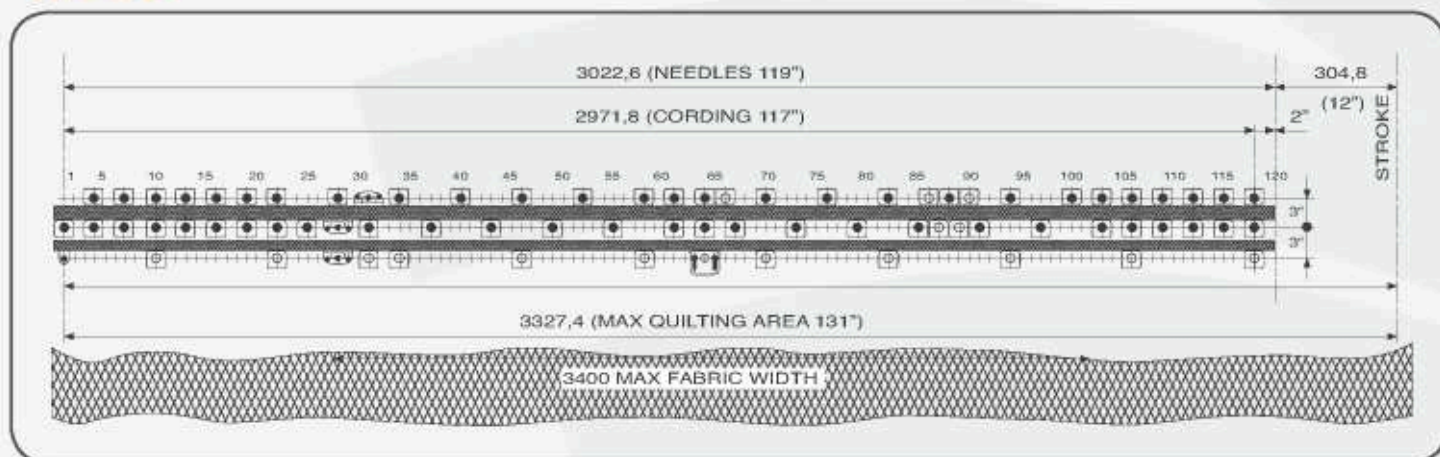
ECORDING MultiTech

Main features and Functions

65"



120"



ECORDING
MultiTech

The results are what the market expected: endless possibilities to exploit your pattern creativity for any article from thin embroidered fabric to heavy quilting (up to 3" 75mm), for present and future requirements.

Definitively **MECA** introduces this revolutionary machine to perform many unique and exclusive programs:

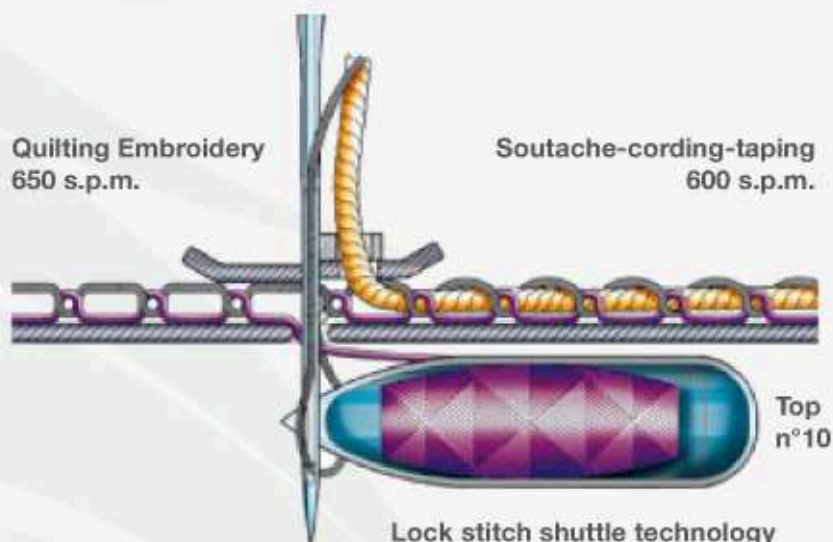
- **STANDARD QUILTING**
- **EMBROIDERY MODE**
- **ECORDING**
- **CORDING FILL**
- **CORDING MACRAMÉ**
- **RIRI & PLISSÉ**
- **MULTI TWIST**

- **SEWING TECHNOLOGY : LOCK STITCH**
- **BRUSHLESS PARALLELOGRAM NEEDLES DRIVE**
- **PATTERN RANGE : 360°**
- **STITCH LENGTH for 65" : 0,1/12,7 mm embroidery mode**
- **STITCH LENGTH for 120" : 0,1/6 mm embroidery**
- **db SOFTWARE : 20.000 patterns**
- **INDEPENDENT POSITIVE PRESSER FEET**
- **BARTACK & JUMP SYSTEM**
- **STOP MOTION INTEGRALE for needles & shuttles**



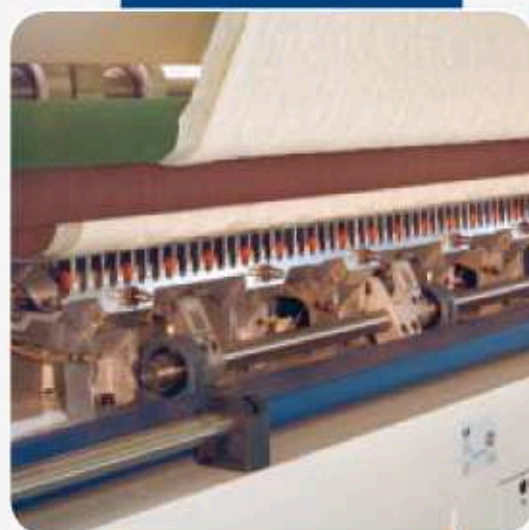
Quilting Embroidery
650 s.p.m.

Soutache-cording-taping
600 s.p.m.



Top
n°10

Lock stitch shuttle technology



RECORDING

MultiTech



Customer care
Diagnostic & logs
User friendly
Drawing editor
Flexibility
Statistic



PEGASUS is the new MECA software able to make the communication through user and machine easier and to reduce maintenance rate.

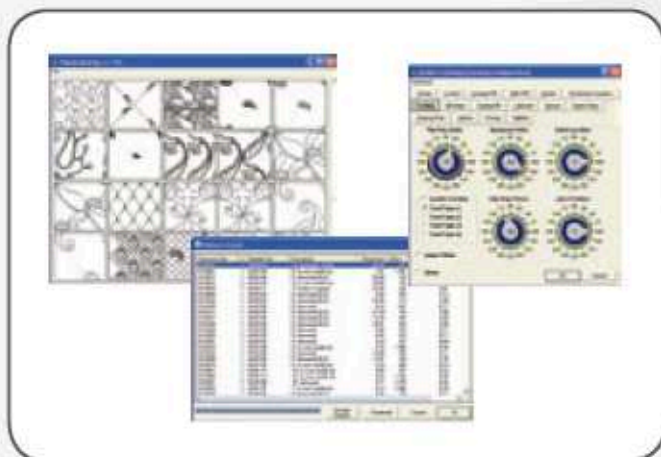
For the automation of its full range of quilting machines, MECA chose a solution based on the use of 2 industrial PCs: one exclusively provides for the real control of the axis, the other, through the winning graphic interface, allows the user to easily and fully control the machine and even the remote assistance and the hardware and software diagnostic.



The diagnostic keeps under control the functioning of the power drives and motors installed on the machine, providing the creation of a series of record files containing the operating machine data. To manage any eventual hardware and software problem, the system records all the operations performed by the quilting machine so that, during the maintenance, technicians are exactly informed about what happened. The PCs also create a series of statistic files and reports that can be integrated into the Customer's operating software.

Thanks to the machine on-line connection, the person in charge of the production or the commercial foreman can carry out inquiries about one or more quilting machines to get the production data, finding out eventual gaps in the productive cycle or checking, i.e., the higher or lower performance of the machine in relation to certain productions. On the whole a full range of statistic data to be examined directly from the office with no need to go next to the machine to get the information.

For a Company like Meca, Leader in this field, exporting in more than 74 countries all over the world, it is essential to have a remote assistance service to reduce to the minimum the maintenance wait. For this reason, the equipment of the MECA quilting machines includes a software that, by means of an internet connection, permits to the Customer to enter the portal of the technical maintenance. From this portal, through a dedicated server, the connection to the PC that controls the quilting machine is assigned to the computer of the technician responsible for the maintenance. From now on the technician has the full control of the quilting machine installed by the Customer, so as the possibility to enter the software functions and even the operating system.



Creative Software



NEW APPROACH:

use of images imported from scanners, vector graphic tools or most used graphic software.



EASY WITH THE SMILE PARAMETERS:

helpful features like the in-line help, parameters preview and the SMILE icon that shows the parameters correctness.

POWERFUL AND CREATIVE:

high precision calculation, 300 in-line special stitches and 100 expandable special stitches that can be adapted to any shape.

ADVANCE PUNCHING:

- automatic filling contour recognition
- automatic object recognition from vector images
- 5 different source lines node types
- automatic, semi-automatic and manual contour definition

IN-LINE EDITING:

moving, scaling and rotating any single design object during or after the design creation.

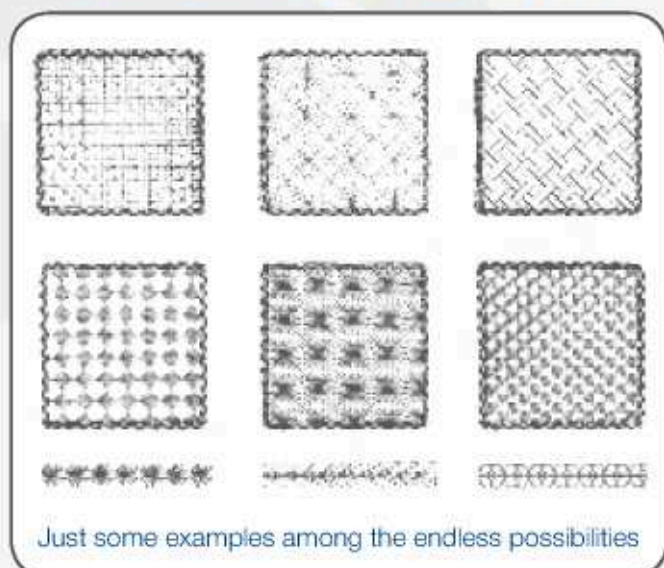
Drag and drop features enabling to move objects and parameters just with a simple mouse click.

TRUE VIEW:

simulation function to preview the design effects and the quilted result.



SPECIAL CONTOUR AND FILL STITCHES:



Just some examples among the endless possibilities



OPTIONAL

- CROSS CUTTING
- EDGES TRIMMER
- MULTI CUTTING HEADS
- STILISTA 2000



www.meca.it



MECA S.p.A.
Strada Prov.le Busto/Cassano, 3
21054 Fagnano Olona (VA) - Italy
Ph. +39 0331 685605 - Fax +39 0331 686340 / 686279
info@meca.it - www.meca.it